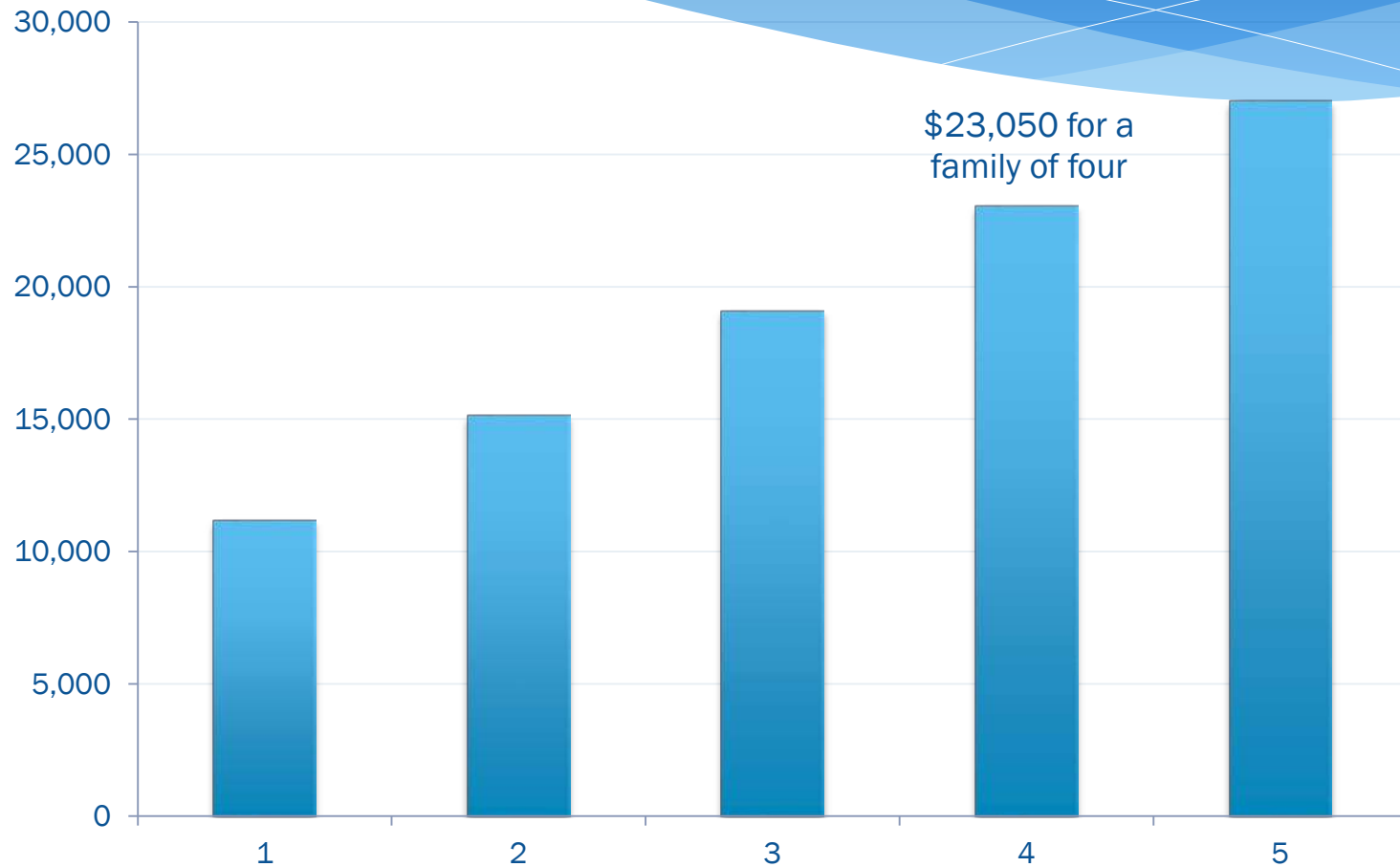


# Poverty in Oregon

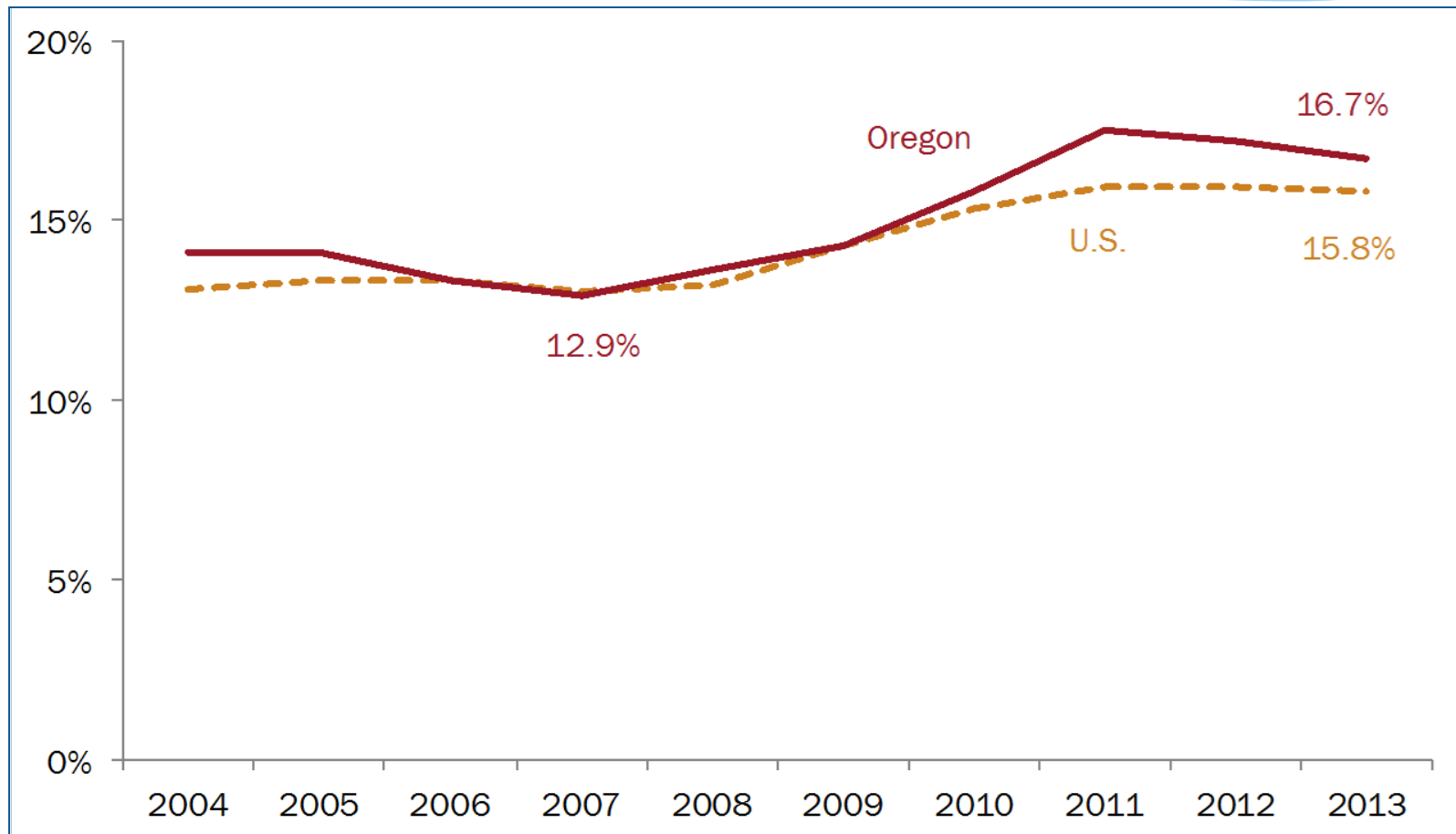
# Measuring Poverty

## Federal Poverty Level (FPL) by Family Size, 2012



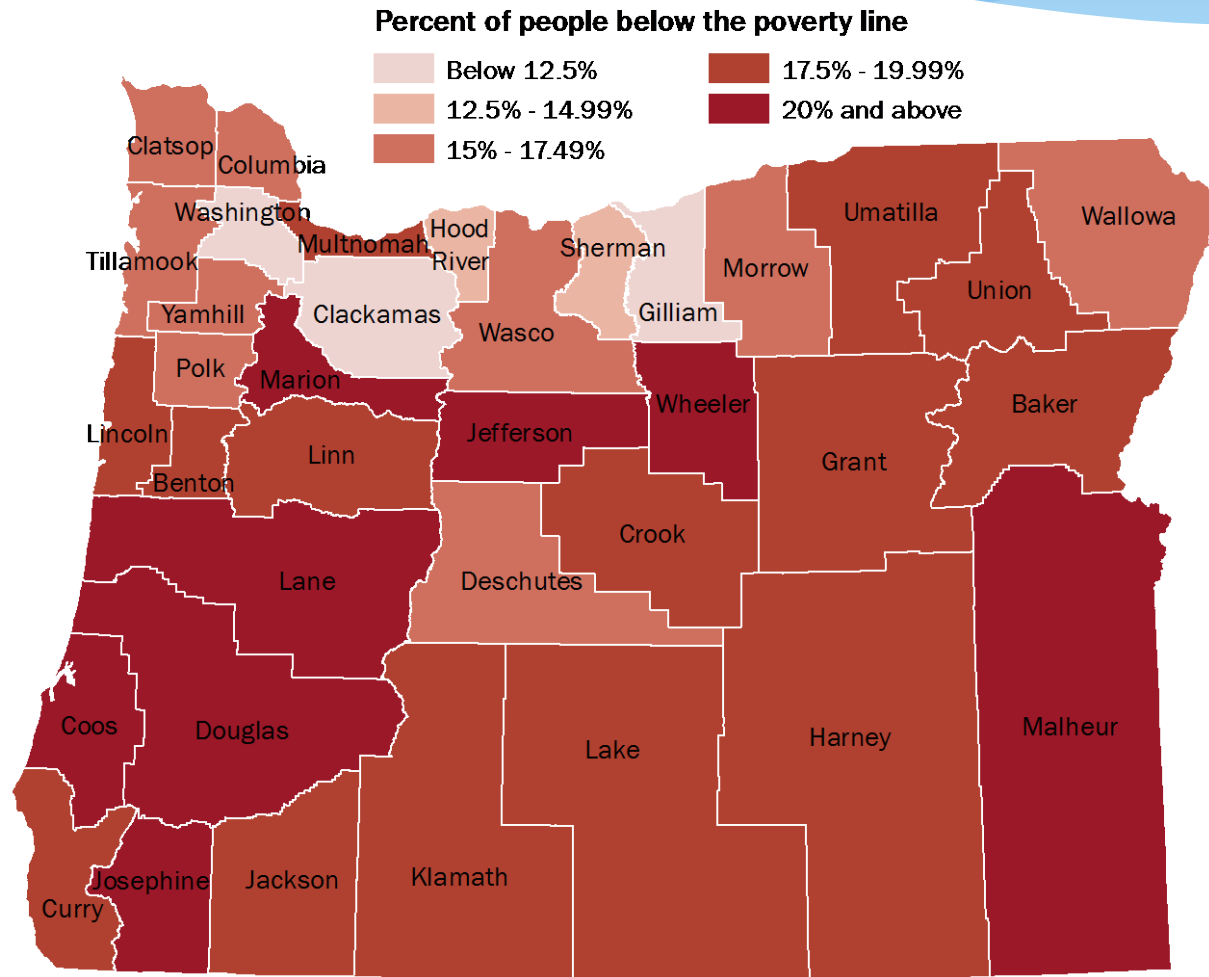
Source: US Department of Health and Human Services

# Oregon's poverty rate exceeds the U.S. level



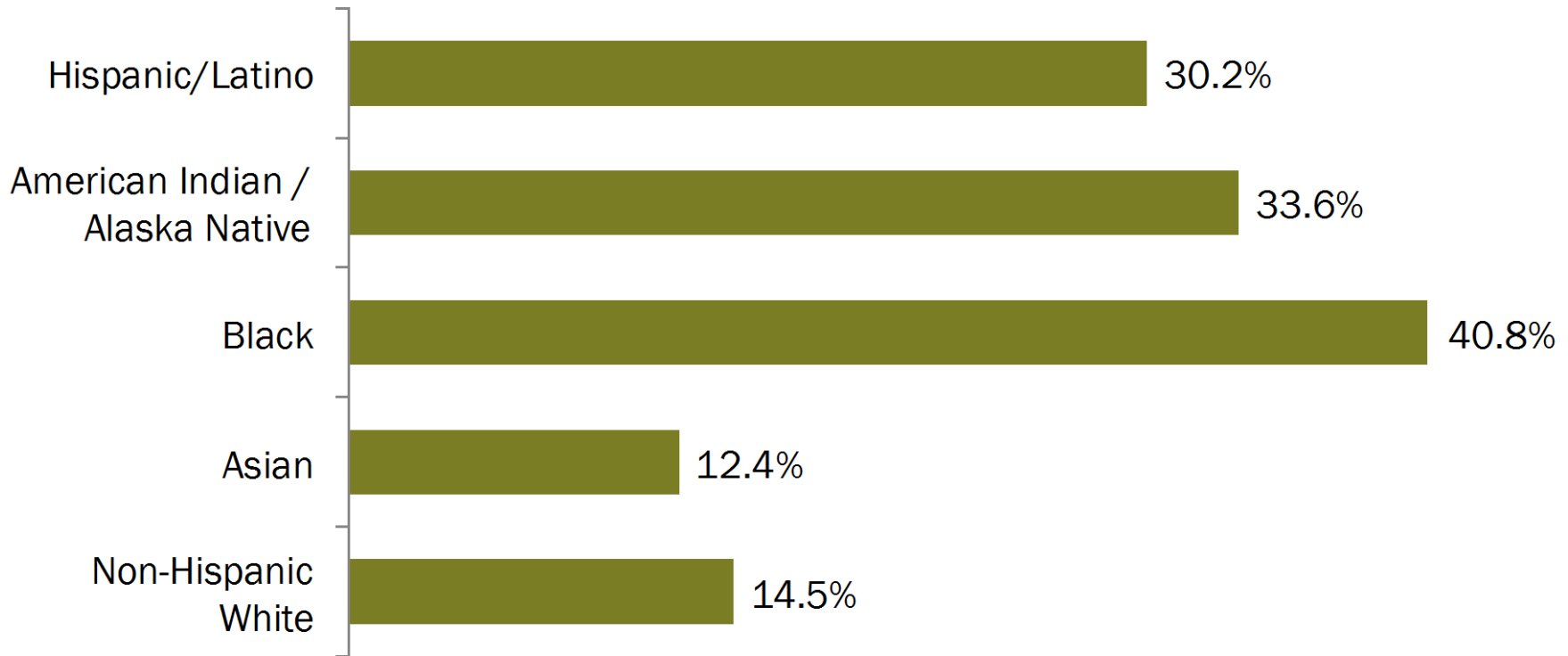
Source: U.S. Census American Community Survey

# Poverty rates have exceeded 20% in some rural counties



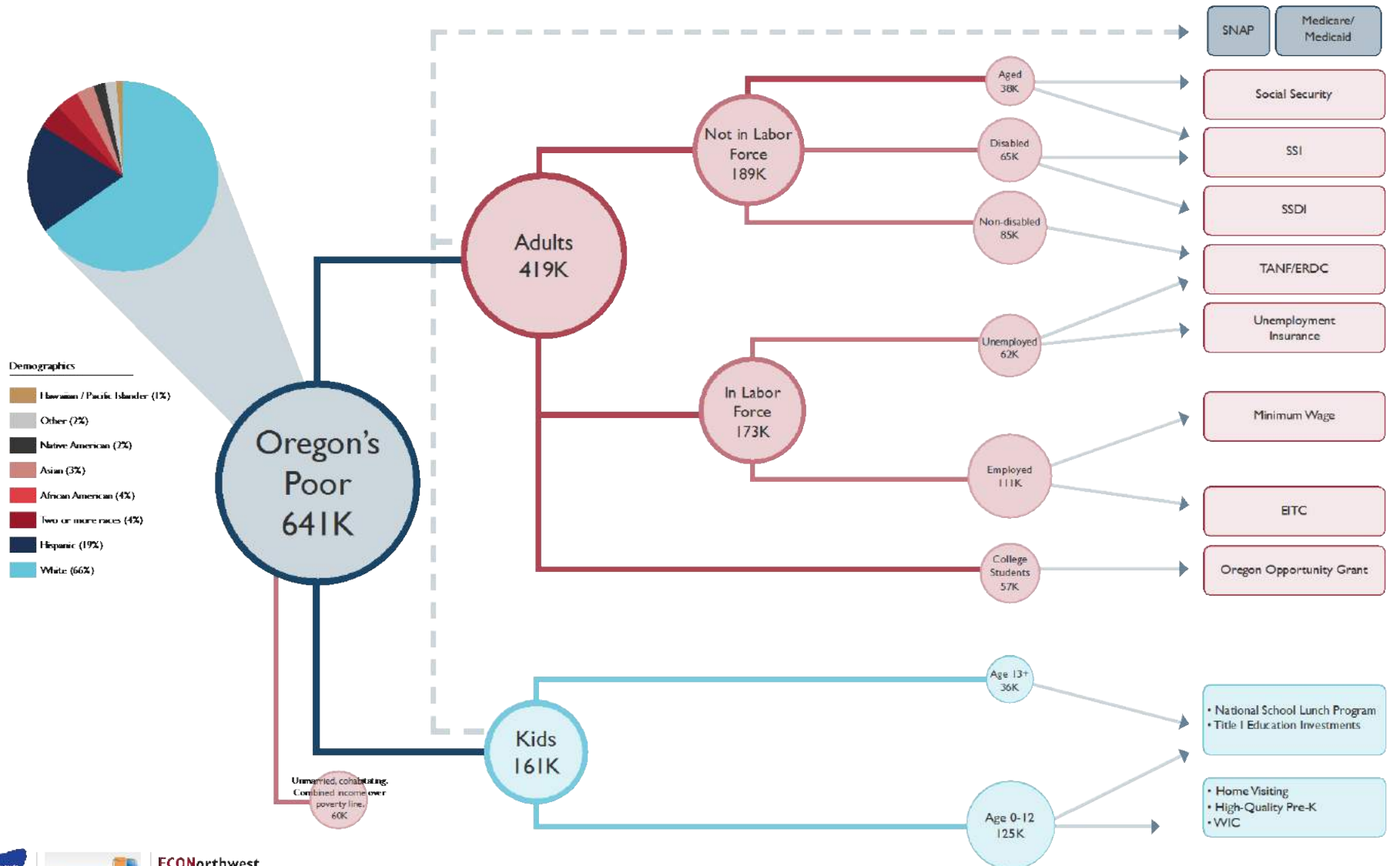
Source: USDA Economic Research Service, 2012

# Poverty rates reach 30-40% for some racial/ethnic minority populations

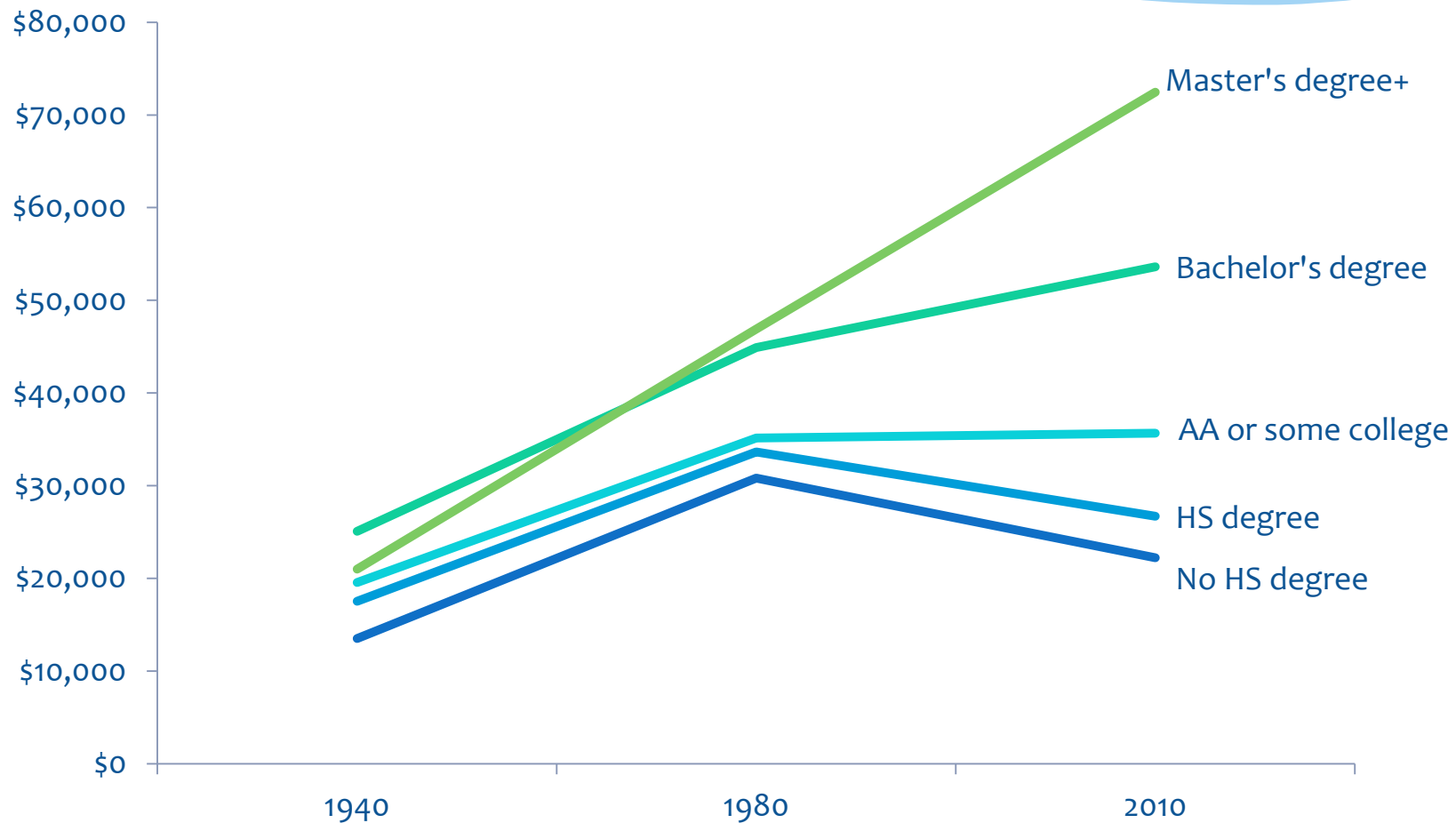


Source: US Census American Community Survey, 2012

# Profile of Oregon Poverty: Populations and Policies



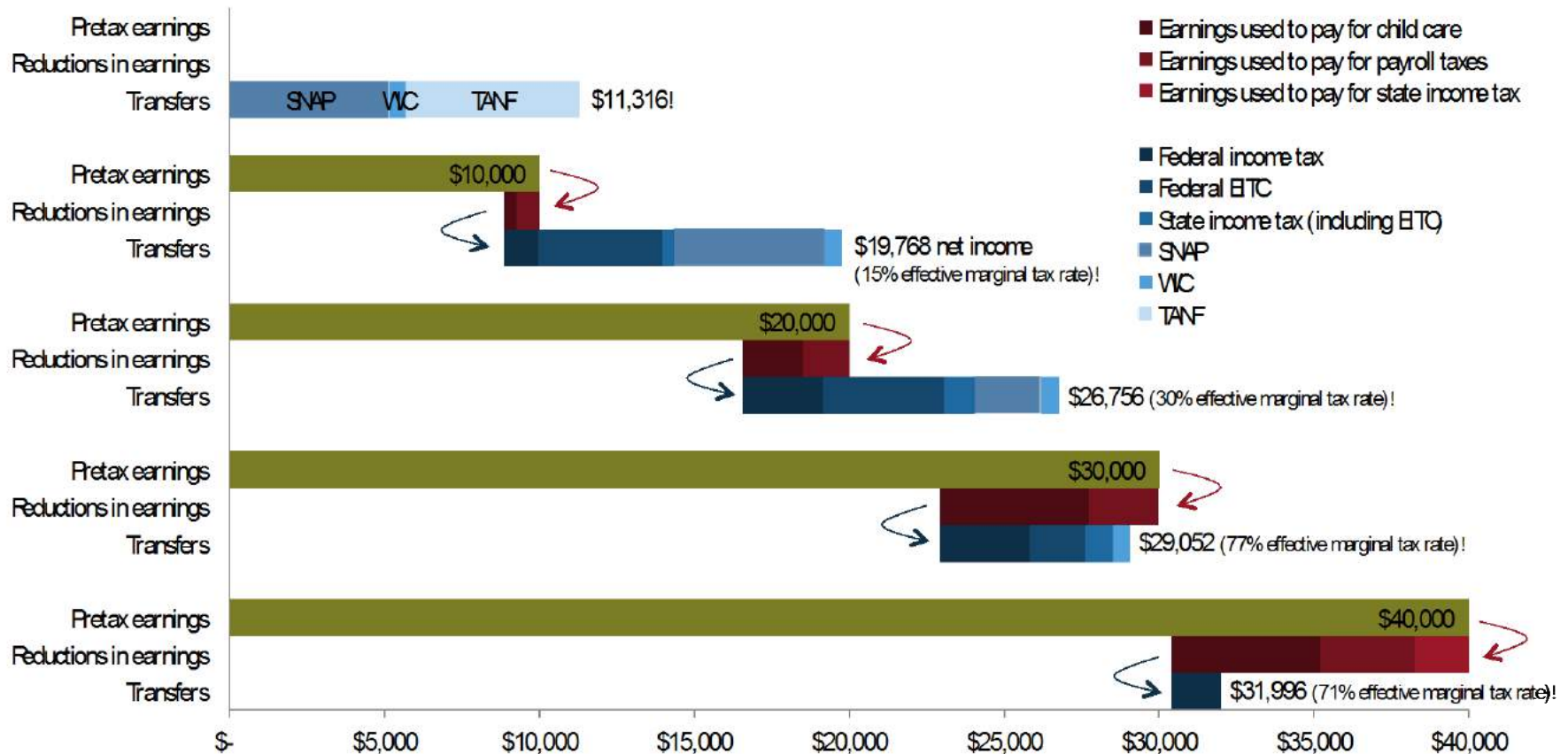
# Job market has collapsed for less-educated workers



Source: US Census data. Average Portland area wages (2010 dollars) by educational attainment, labor force participants aged 25-64

# Changes in net income for a single parent with two children in Oregon:

As household earnings go up (through higher wages or additional hours worked), tax and child care liabilities grow and support declines



For a sample family consisting of a single parent with two children (ages 4 and 7) in Oregon. Effective marginal tax rates calculated on the last \$10,000 of earnings.  
ECONorthwest analysis of Urban Institute data, Net Income Change Calculator, using 2008 tax laws and benefit rules.



# Poverty here at home

## *Forest Grove*

Number of people in poverty: **8,600 (9%)**

Young child poverty rate (under age 12): **4%**

Share in a household with a disabled adult: **35%**

Share in a household with a first-generation immigrant: **26%**

Share in a household with at least one child under age 4: **6%**

Share by race/ethnicity:

■ White (not Hispanic) ■ Hispanic ■ Black ■ Asian ■ American Indian / Alaska Native ■ Other ■ Two or more races

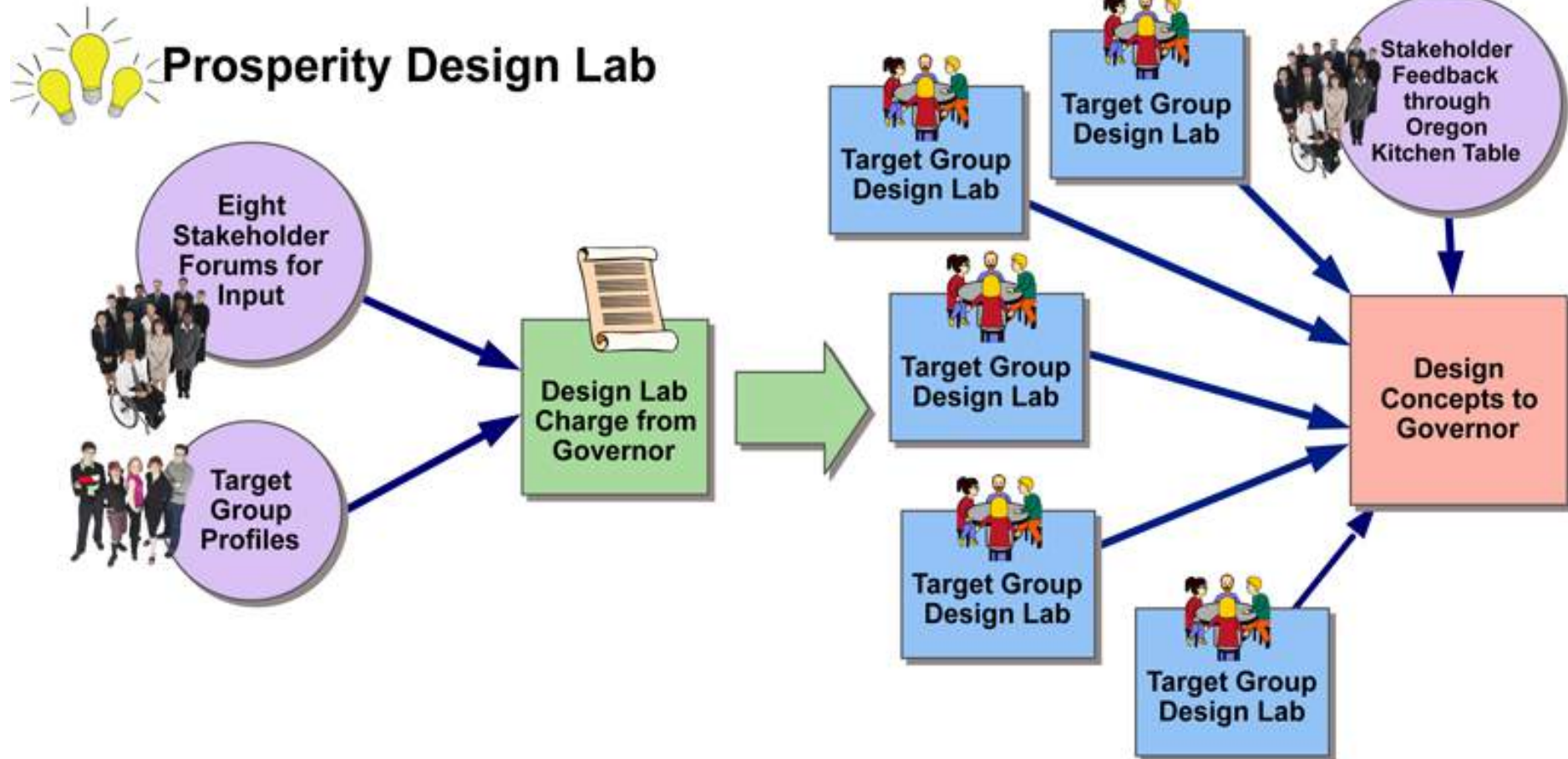


0%

100%

# Prosperity Design Lab

# Design Lab Process



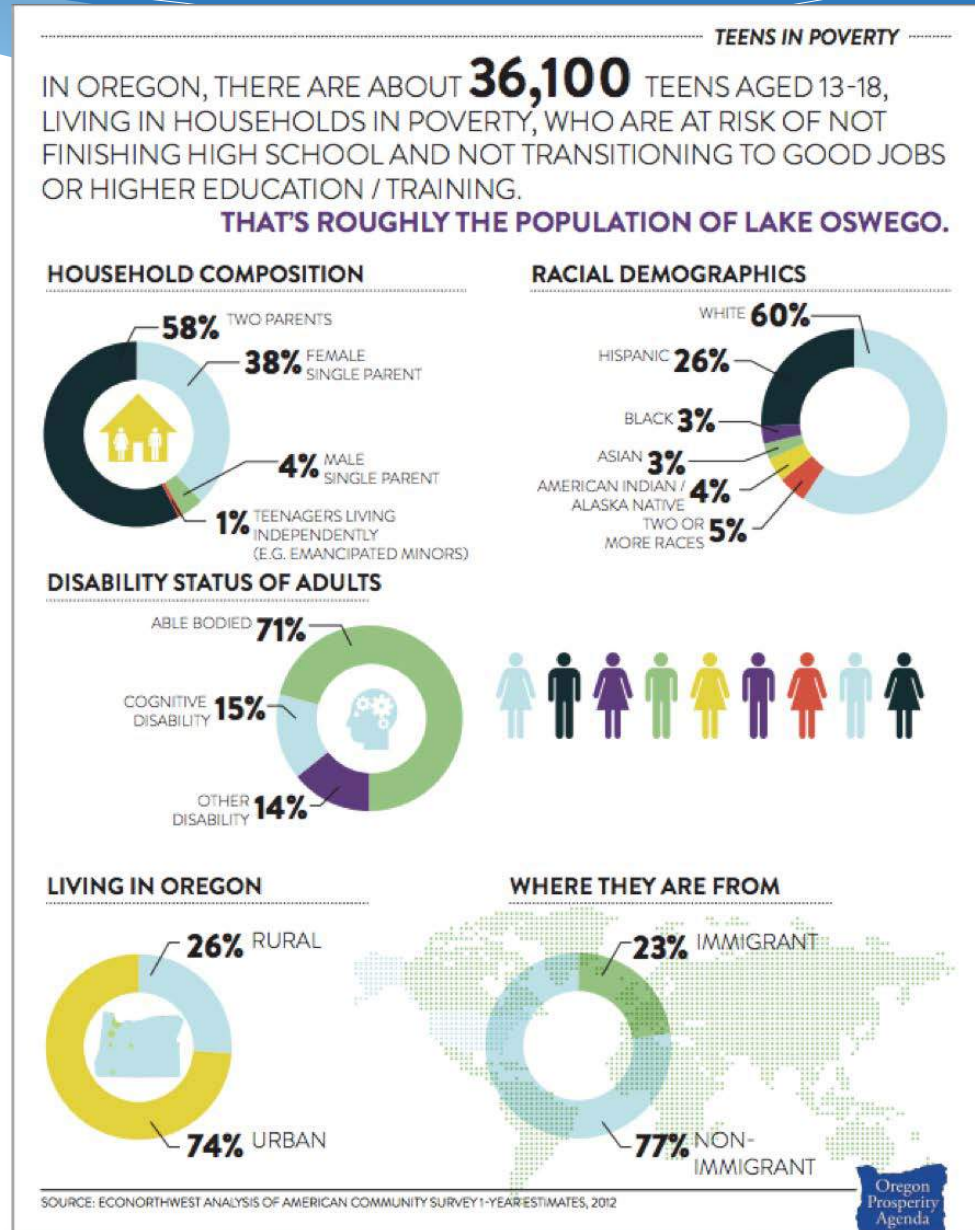
# Target groups

1. Teens aged 13-18, living in households in poverty, who are at risk of not finishing high school and not transitioning to good jobs or higher education/training.
2. Single- or two-parent households (with children) in poverty with at least one parent who is a first-generation immigrant.
3. Households in poverty with at least one disabled adult aged 18-64.
4. Single- or two-parent households in poverty with children aged 0-4.
5. People coming out of the corrections systems (parole, probation, juvenile detention or prison) living in households in poverty.

**Please help us save some green - don't mark up the profile sheets so we can reuse them for upcoming forums!**

# Target group #1

\*Teens aged 13-18, living in households in poverty, who are at risk of not finishing high school and not transitioning to good jobs or higher education/training.



# Target group #2

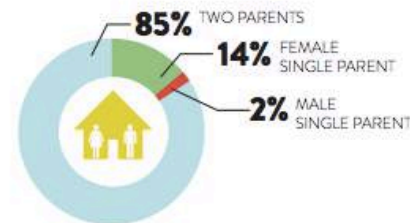
\*Single- or two-parent households (with children) in poverty with at least one parent who is a first-generation immigrant.

## FIRST-GENERATION IMMIGRANT FAMILIES IN POVERTY

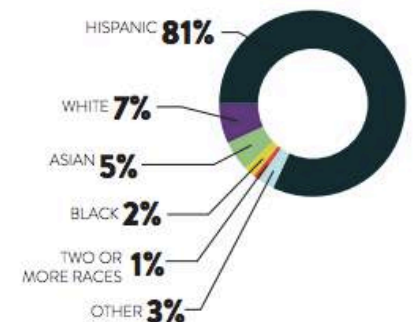
THERE ARE ABOUT **99,700** OREGONIANS IN SINGLE- OR TWO-PARENT HOUSEHOLDS IN POVERTY WHERE AT LEAST ONE PARENT IS A FIRST-GENERATION IMMIGRANT. MORE THAN HALF OF THESE INDIVIDUALS ARE CHILDREN OR TEENS.

**THAT'S ROUGHLY THE POPULATION OF CORVALLIS.**

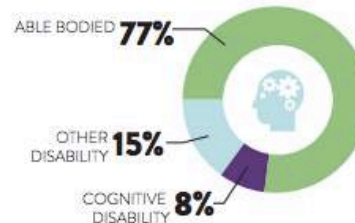
### HOUSEHOLD COMPOSITION



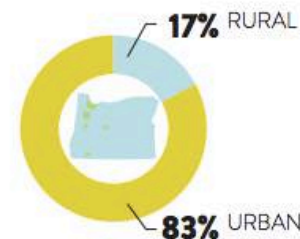
### RACIAL DEMOGRAPHICS



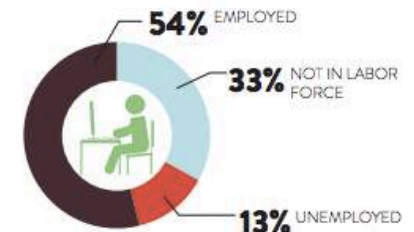
### DISABILITY STATUS OF ADULTS



### LIVING IN OREGON



### EMPLOYMENT STATUS OF ADULTS



SOURCE: ECONORTHWEST ANALYSIS OF AMERICAN COMMUNITY SURVEY 1-YEAR ESTIMATES, 2012



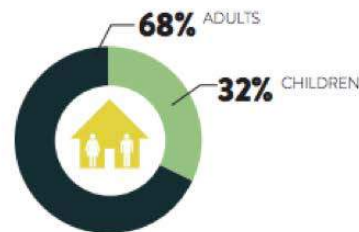
# Target group #3

\*Households in poverty with at least one disabled adult aged 18-64.

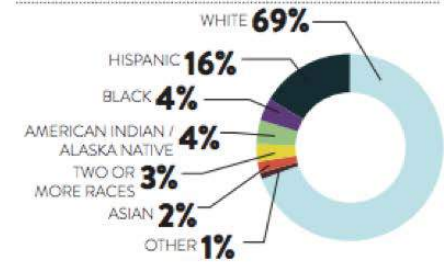
HOUSEHOLDS WITH DISABLED ADULTS IN POVERTY  
THERE ARE ABOUT **123,500** OREGONIANS IN POVERTY LIVING IN A HOUSEHOLD WITH A DISABLED ADULT.



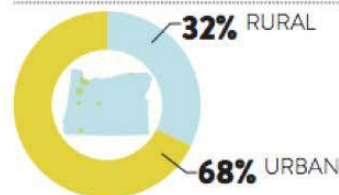
## HOUSEHOLD COMPOSITION



## RACIAL DEMOGRAPHICS

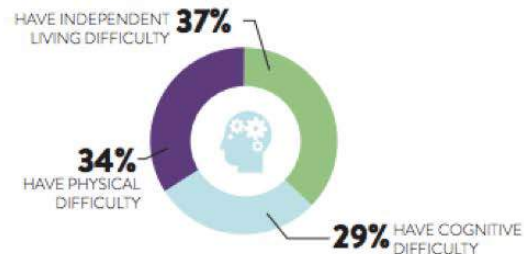


## LIVING IN OREGON



## OF DISABLED OREGONIAN ADULTS LIVING IN POVERTY

### OF DISABLED OREGONIAN ADULTS LIVING IN POVERTY



SOURCE: ECONORTHWEST ANALYSIS OF AMERICAN COMMUNITY SURVEY 1-YEAR ESTIMATES, 2012

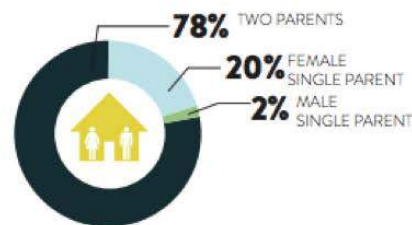
# Target group #4

\*Single- or two-parent households in poverty with children aged 0-4.

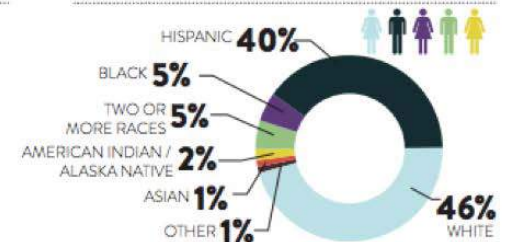
## FAMILIES WITH YOUNG CHILDREN IN POVERTY

THERE ARE ABOUT **164,900** OREGONIANS IN SINGLE- OR TWO-PARENT HOUSEHOLDS IN POVERTY WITH CHILDREN AGES 0-4. MORE THAN HALF OF THESE INDIVIDUALS ARE CHILDREN OR TEENS.

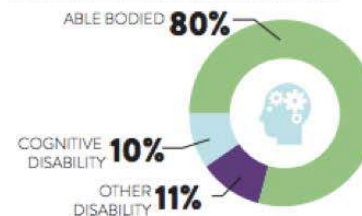
### HOUSEHOLD COMPOSITION



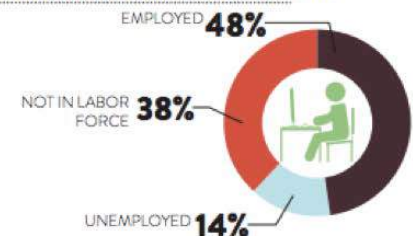
### RACIAL DEMOGRAPHICS



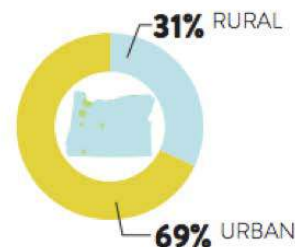
### DISABILITY STATUS OF ADULTS



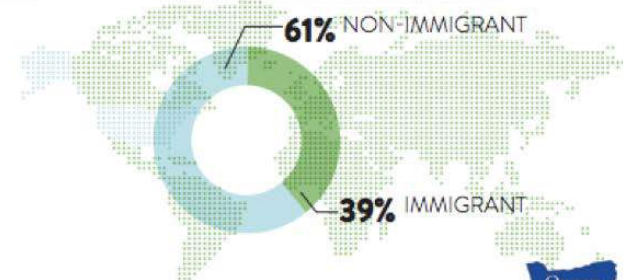
### EMPLOYMENT STATUS OF ADULTS



### LIVING IN OREGON



### WHERE THEY ARE FROM



SOURCE: ECONORTHWEST ANALYSIS OF AMERICAN COMMUNITY SURVEY 1-YEAR ESTIMATES, 2012



# Target group #5

\*People coming out of the corrections systems (parole, probation, juvenile detention or prison) living in households in poverty.

